



ANYTIME EVERYWHERE



**TBR TIRE
CATALOGUE 2021**



INTRODUCTION

With rapid growth for more than 8 years, QINGDAO LANDSPIDER TIRE CORP., LTD has become one of the most professional tire suppliers in China. Our global marketing network covers over 150 countries and regions with a total turnover of 220 million US Dollars during year 2020, and aiming for 300 million Dollars in year 2021. LANDSPIDER as a new brand delivers extensive portfolio of tire options to accommodate market demanding and has the appropriate tire to satisfy your needs for various vehicles.

Meanwhile, Landspider tire can be rest assured to provide superior performance like fuel economy, a quiet comfortable ride, and tire longevity with the superb design and excellent compound.

We value teamwork / product innovation / safety / comfort. More importantly, we are diligent to provide professional products which can be tailored to meet different needs.

At Landspider, we stand united with our customers together anytime everywhere!

CONTENTS



01



LONGTRAXX AP600

03



LONGTRAXX DR660

05



LONGTRAXX MS300

07



LONGTRAXX DR330

09



LONGTRAXX HT700

11



LONGTRAXX MT770

13



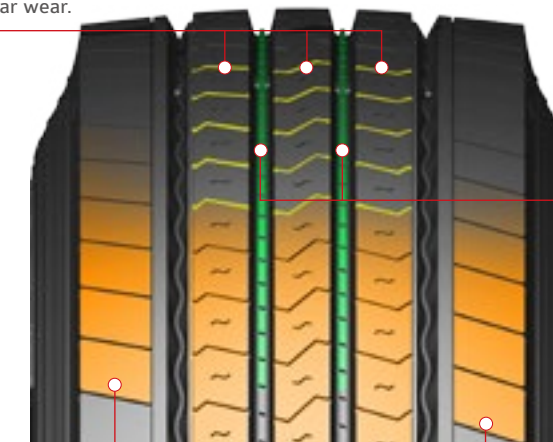
LONGTRAXX HT800

LONGTRAXX AP600



Multi Kerf Design

Better traction, increased mileage, controlled tearing and wearing with less irregular wear.



Stone Ejector

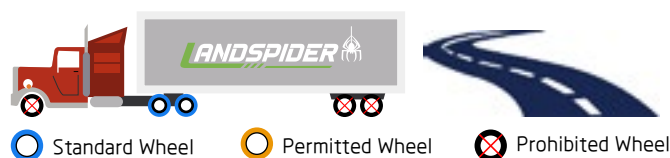
Stone ejectors ensure grooves are kept clear at all times by using an additional rubber material to force unwanted debris out.

Wide Tread and Shoulder Design

Longer mileage and better handling performance.

Item No.	Size Description	Tread Width (mm)	Tread Depth (mm 1/32")
LAP60001	*275/70R22.5 148/145M	226	14.5 18.2
LAP60002	*295/60R22.5 150/147M	250	14.5 18.2
LAP60003	295/80R22.5 154/151M	230	14.5 18.2
LAP60004	*315/60R22.5 154/148M	268	14.5 18.2
LAP60005	315/70R22.5 156/150M	256	14.5 18.2
LAP60006	315/80R22.5 157/154M	240	14.5 18.2
LAP60007	11R22.5 148/145M	216	14.5 18.2
LAP60008	12R22.5 152/149M	240	16.5 20.8

LONGTRAXX DR660

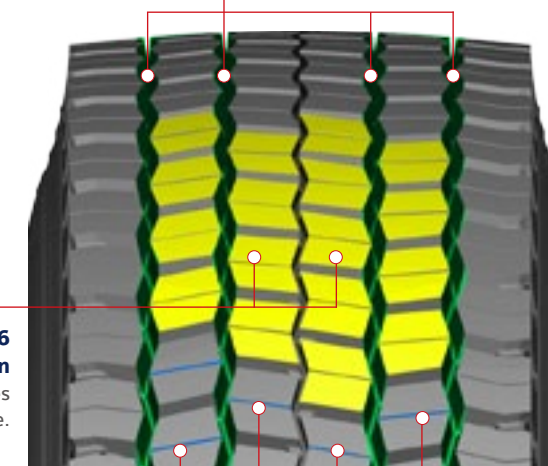


Combination Structure of Rib and 6 Angle Block Pattern

Improves grip with better traction, increases mileage and enhances handling performance.

Zigzag Traction Grooves and Optimized Multi-angular Sipes

Improved traction and braking performance through expansion of 3 zigzag grooves. The unique sipe design prevents chipping and cutting.



Fine Kerfs Design

Fine kerfs design controls tearing and wearing of hidden grooves and help keep good traction during whole life.

Item No.	Size Description	Tread Width (mm)	Tread Depth (mm 1/32")
LDR66001	*275/70R22.5 148/145M	240	18.5 23.2
LDR66002	*295/60R22.5 150/147M	266	18.5 23.2
LDR66003	295/80R22.5 154/151M	250	20.0 25.2
LDR66004	*315/60R22.5 154/148M	280	18.5 23.2
LDR66005	315/70R22.5 156/150M	270	18.5 23.2
LDR66006	315/80R22.5 157/154M	260	20.0 25.2
LDR66007	11R22.5 148/145M	220	20.0 25.2
LDR66008	12R22.5 152/149M	250	20.0 25.2

LONGTRAXX MS300

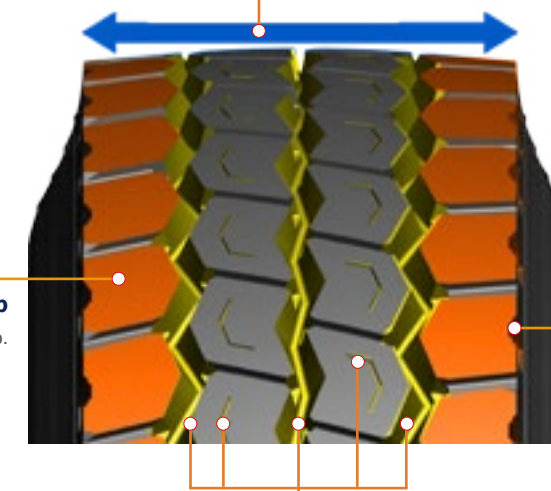


Solid Center Block and Wider Should Ribs

Solid center block and wider should ribs offer improved tread stiffness, leading to an increased mileage and rolling resistance.

Semi Open Shoulder Rib

For excellent traction and wet grip.



Semi Open Shoulder Rib

For excellent traction and wet grip.

Zigzag Traction Grooves and Optimized Multi-angular Sipes

Improved traction and braking performance through expansion of 3 zigzag grooves. The unique sipe design prevents chipping and cutting.

Item No.	Size Description	Tread Width (mm)	Tread Depth (mm 1/32")
LMS30001	315/80R22.5 157/154L	256	16.5 20.8
LMS30002	11R22.5 148/145L	216	15.5 19.6
LMS30003	12R22.5 152/149L	234	15.5 19.6
LMS30004	13R22.5 156/150L	236	16.5 20.8

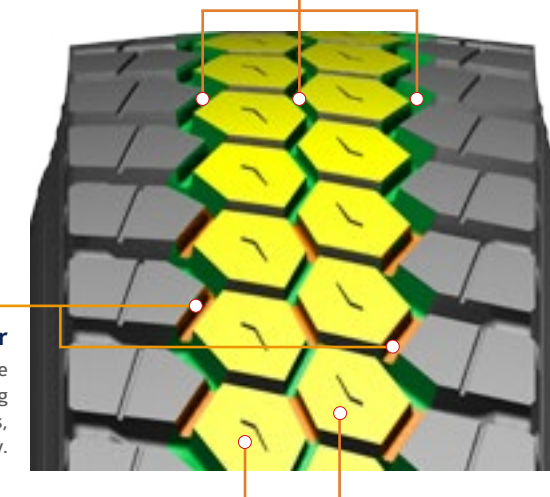


LONGTRAXX DR330



Zigzag Traction Grooves and Optimized Multi-angular Sipes

Improved traction and braking performance through expansion of 3 zigzag grooves. The unique sipe design prevents chipping and cutting.



Inter block Tie-bar

The inter block tie-bar at the centre guarantees outstanding straight driving performance and impact dispersion for blocks, thereby improving durability.

Combination Structure of Rib and 6 Angle Block Pattern

Improves grip with better traction, increases mileage and enhances handling performance.

Item No.	Size Description	Tread Width (mm)	Tread Depth (mm 1/32")
LDR33001	315/80R22.5 157/154L	262	20.5 25.8
LDR33002	11R22.5 148/145L	220	20.5 25.8
LDR33003	12R22.5 152/149L	240	20.5 25.8
LDR33004	13R22.5 156/150L	240	21.5 27.0



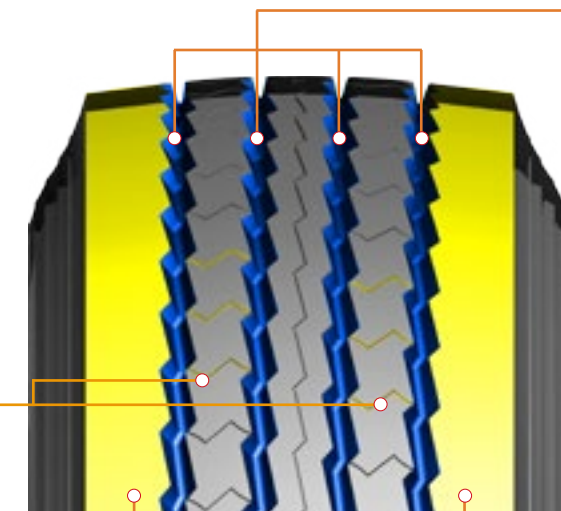


LONGTRAXX HT700



Optimal Waved Grooves

Adoption of optimal waved grooves for maximum stability and better water dispersal.



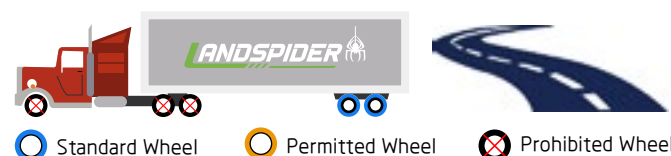
Kerfs Design

Full-depth kerfs offer exceptional traction throughout the usable life of the tire.

Wide Shoulder Rib

Adoption of wider tread provides maximum wear resistance and longer mileage.

Item No.	Size Description	Tread Width (mm)	Tread Depth (mm 1/32")
LHT70001	*385/55R22.5 160K(158L)	306	15.5 19.6
LHT70002	385/65R22.5 160K(158L)	296	15.5 19.6
LHT70003	*425/65R22.5 165K	326	15.5 19.6
LHT70004	*445/65R22.5 169K	346	15.5 19.6





LONGTRAXX MT770



Stone Ejector

Stone ejector rib in the middle of the grooves prevents stone drilling.

Tie Bars Design

Tie bars between each block prevents irregular wear.



Expanded Groove Width

Expanded groove width enhances traction performance.

Item No.	Size Description	Tread Width (mm)	Tread Depth (mm 1/32")
LMT77001	*385/55R22.5 160K(158L)	310	16.5 20.8
LMT77002	385/65R22.5 160K(158L)	300	16.5 20.8
LMT77003	*425/65R22.5 165K	330	16.5 20.8
LMT77004	*445/65R22.5 169K	350	16.5 20.8



Standard Wheel Permitted Wheel Prohibited Wheel

LONGTRAXX HT800

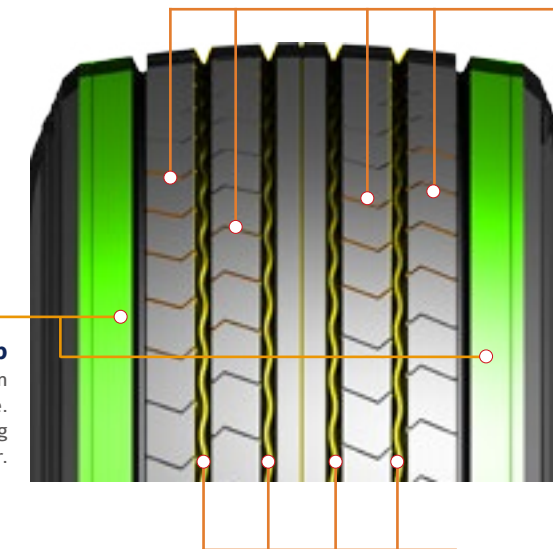


Standard Wheel Permitted Wheel Prohibited Wheel



Multi Kerfs Design

The multi kerfs prevent irregular wear from external forces and provide a rib's stiffness.



Wide Shoulder Rib

Adoption of wider tread provides maximum wear resistance and longer mileage. The robust shoulder ribs provide driving stability and prevent irregular wear.

Optimal Linear Grooves

Adoption of 4 optimal linear grooves provides maximum stability, better water dispersal and low noise level.

Item No.	Size Description	Tread Width (mm)	Tread Depth (mm 1/32")
LHT80001	435/50R19.5 160J	368	13.5 17.0
LHT80002	445/45R19.5 160J	368	13.5 17.0